

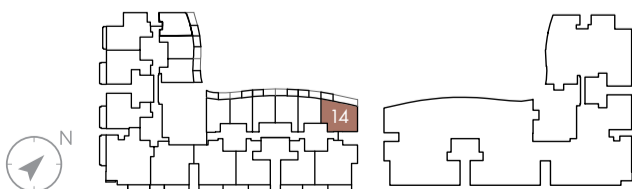
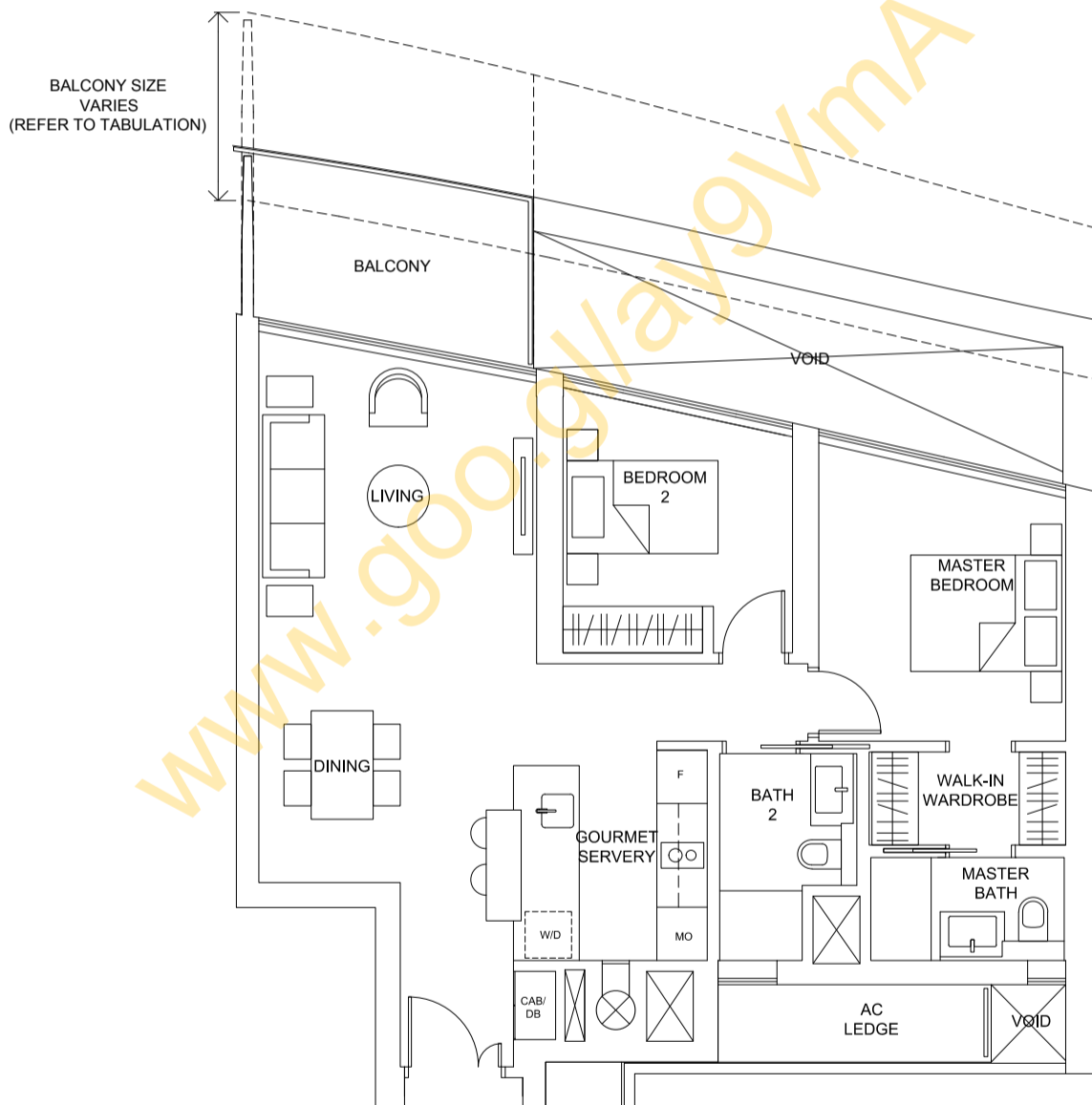
2-Bedroom

Type 2A

90 sq.m. / 969 sq.ft. to 99 sq.m. / 1,066 sq.ft.
 (including balcony of 6 sq.m. / 65 sq.ft. to 15 sq.m. / 161 sq.ft.)

TABULATION

Unit	Balcony Area		Floor Area	
	sq.m.	sq.ft.	sq.m.	sq.ft.
#09-14, #10-14	6	65	90	969
#08-14, #11-14	7	75	91	980
#12-14	8	86	92	990
#04-14, #05-14, #07-14, #13-14	9	97	93	1,001
#06-14, #14-14, #24-14, #25-14, #26-14, #27-14	10	108	94	1,012
#23-14, #28-14	11	118	95	1,023
#15-14, #22-14, #29-14, #30-14	12	129	96	1,033
#16-14, #21-14, #31-14, #32-14	13	140	97	1,044
#17-14, #20-14	14	151	98	1,055
#18-14, #19-14	15	161	99	1,066



All areas and/or measurements stated in this Brochure are approximates only and are subject to final survey, and the above plans are subject to change(s) as may be required by the releant authorities.

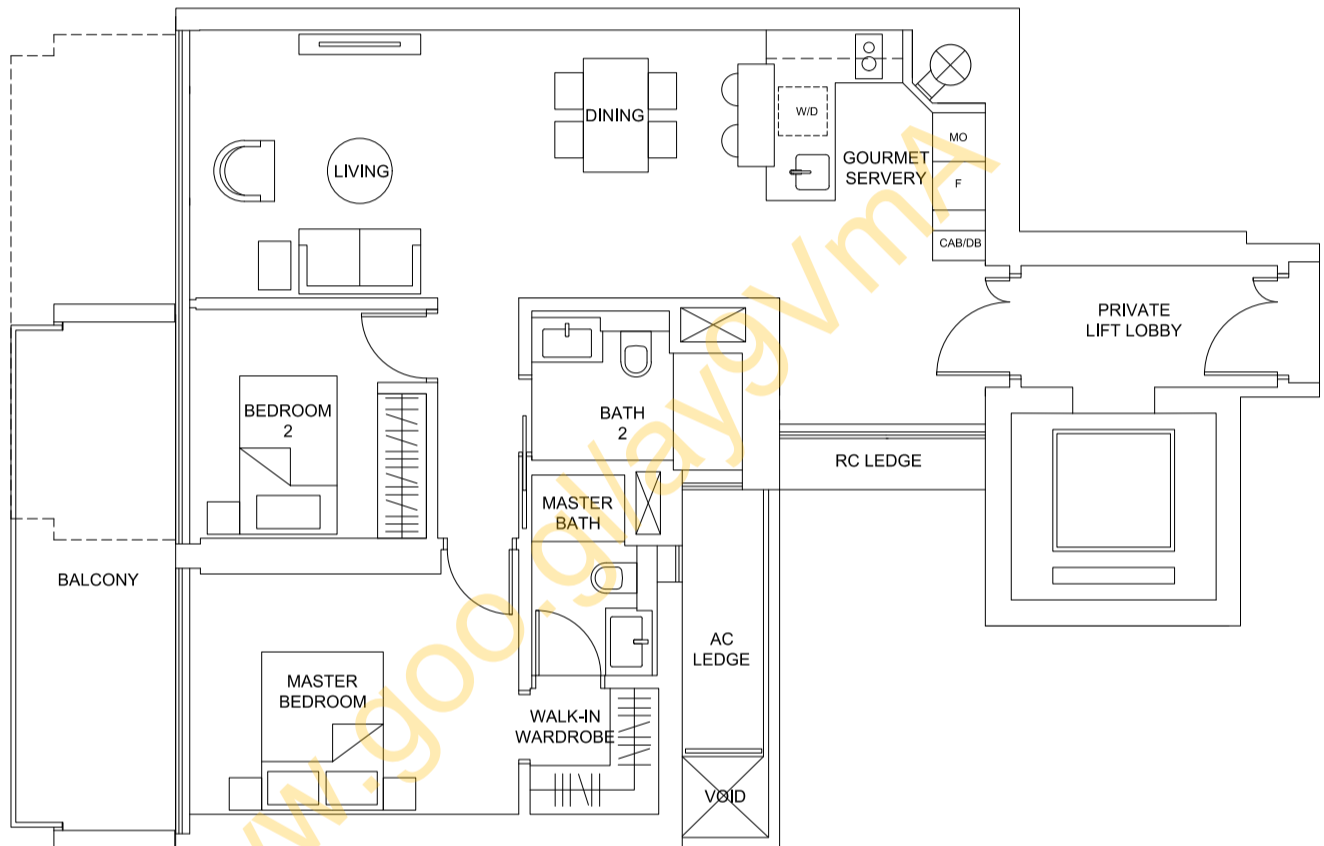
2-Bedroom

Type 2C

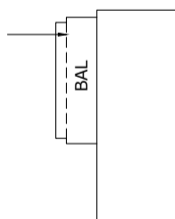
104 sq.m. / 1,119 sq.ft. to 105 sq.m. / 1,130 sq.ft.
 (including balcony of 12 sq.m. / 129 sq.ft. to 13 sq.m. / 140 sq.ft.)

TABULATION

Unit	Balcony Area		Floor Area		Configuration
	sq.m.	sq.ft.	sq.m.	sq.ft.	
#07-01, #08-01, #09-01, #10-01, #13-01, #14-01, #15-01, #16-01, #20-01, #21-01, #22-01, #27-01, #28-01	12	129	104	1,119	A
#04-01, #05-01, #06-01, #11-01, #12-01, #17-01, #18-01, #19-01, #23-01, #24-01, #25-01, #26-01, #29-01, #30-01, #31-01, #32-01	13	140	105	1,130	B

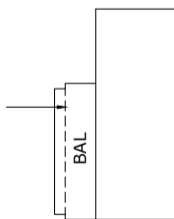


Outline of Roof Above
 #10-01, #16-01,
 #22-01, #28-01

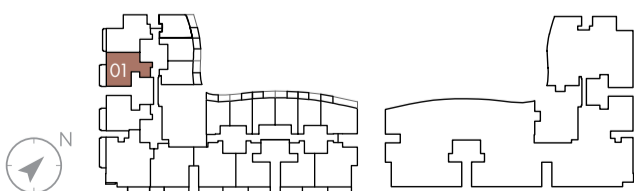


Balcony Configuration A

Outline of Roof Above
 #06-01, #12-01,
 #19-01, #26-01



Balcony Configuration B



All areas and/or measurements stated in this Brochure are approximates only and are subject to final survey, and the above plans are subject to change(s) as may be required by the relevant authorities.

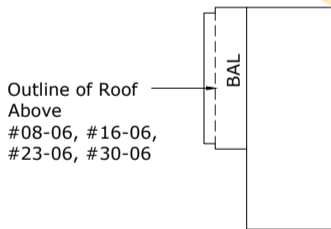
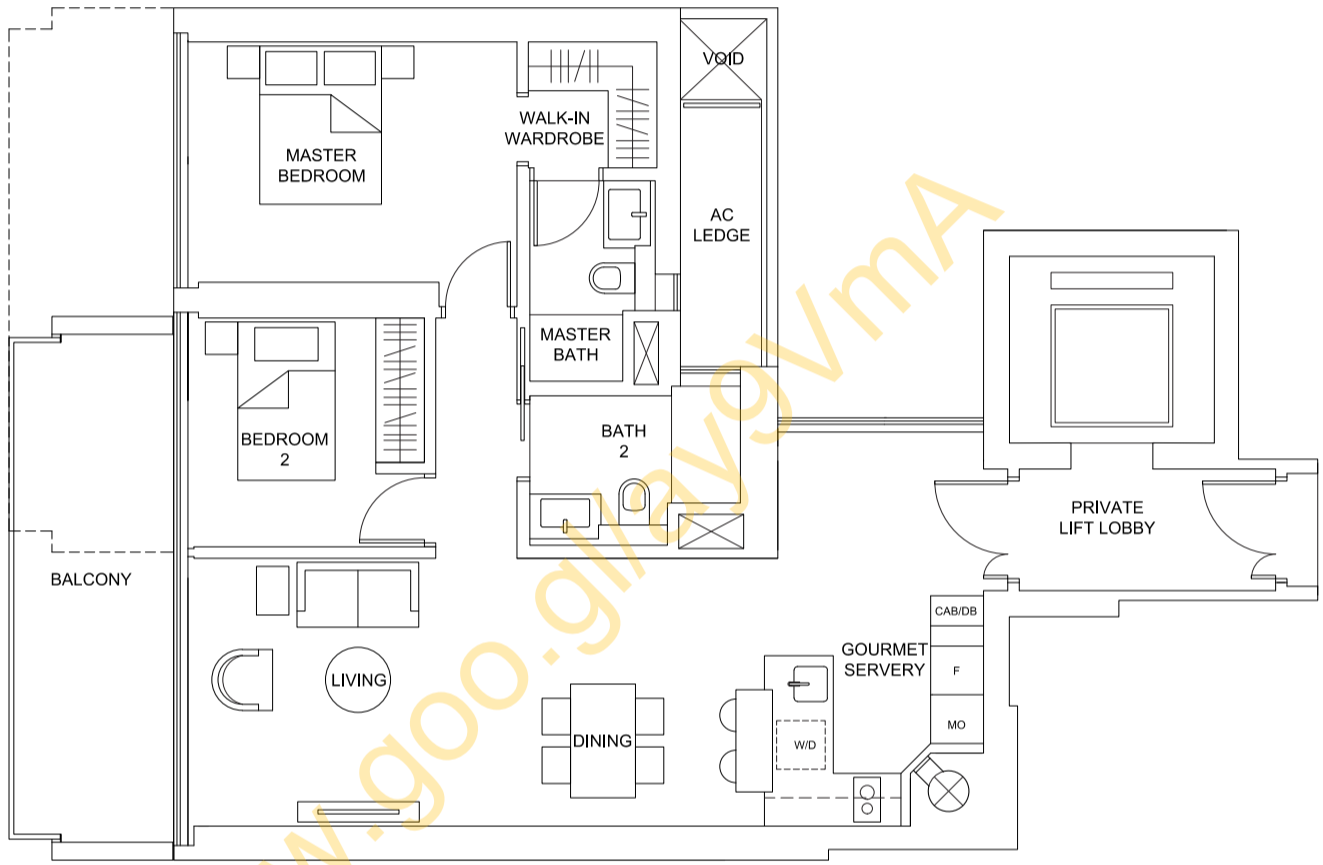
2-Bedroom

Type 2D

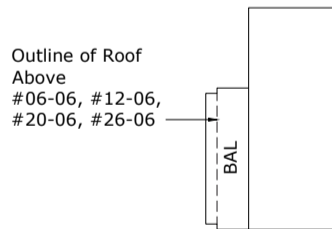
104 sq.m. / 1,119 sq.ft.
(including balcony of 13 sq.m. / 140 sq.ft.)

TABULATION

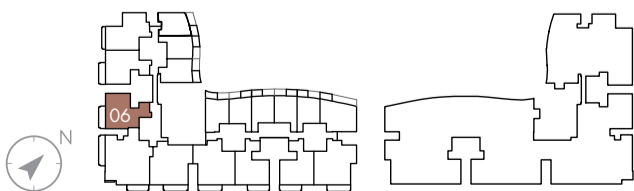
Unit	Balcony Area		Floor Area		Configuration
	sq.m.	sq.ft.	sq.m.	sq.ft.	
#07-06, #08-06, #13-06, #14-06, #15-06, #16-06, #21-06, #22-06, #23-06, #27-06, #28-06, #29-06, #30-06	13	140	104	1,119	A
#04-06, #05-06, #06-06, #09-06, #10-06, #11-06, #12-06, #17-06, #18-06, #19-06, #20-06, #24-06, #25-06, #26-06, #31-06, #32-06	13	140	104	1,119	B



Balcony Configuration A



Balcony Configuration B



All areas and/or measurements stated in this Brochure are approximates only and are subject to final survey, and the above plans are subject to change(s) as may be required by the releant authorities.

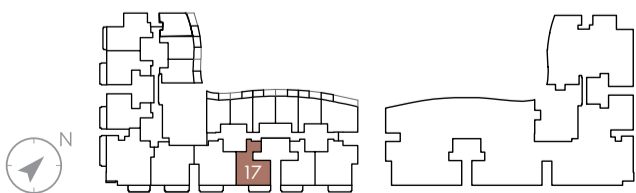
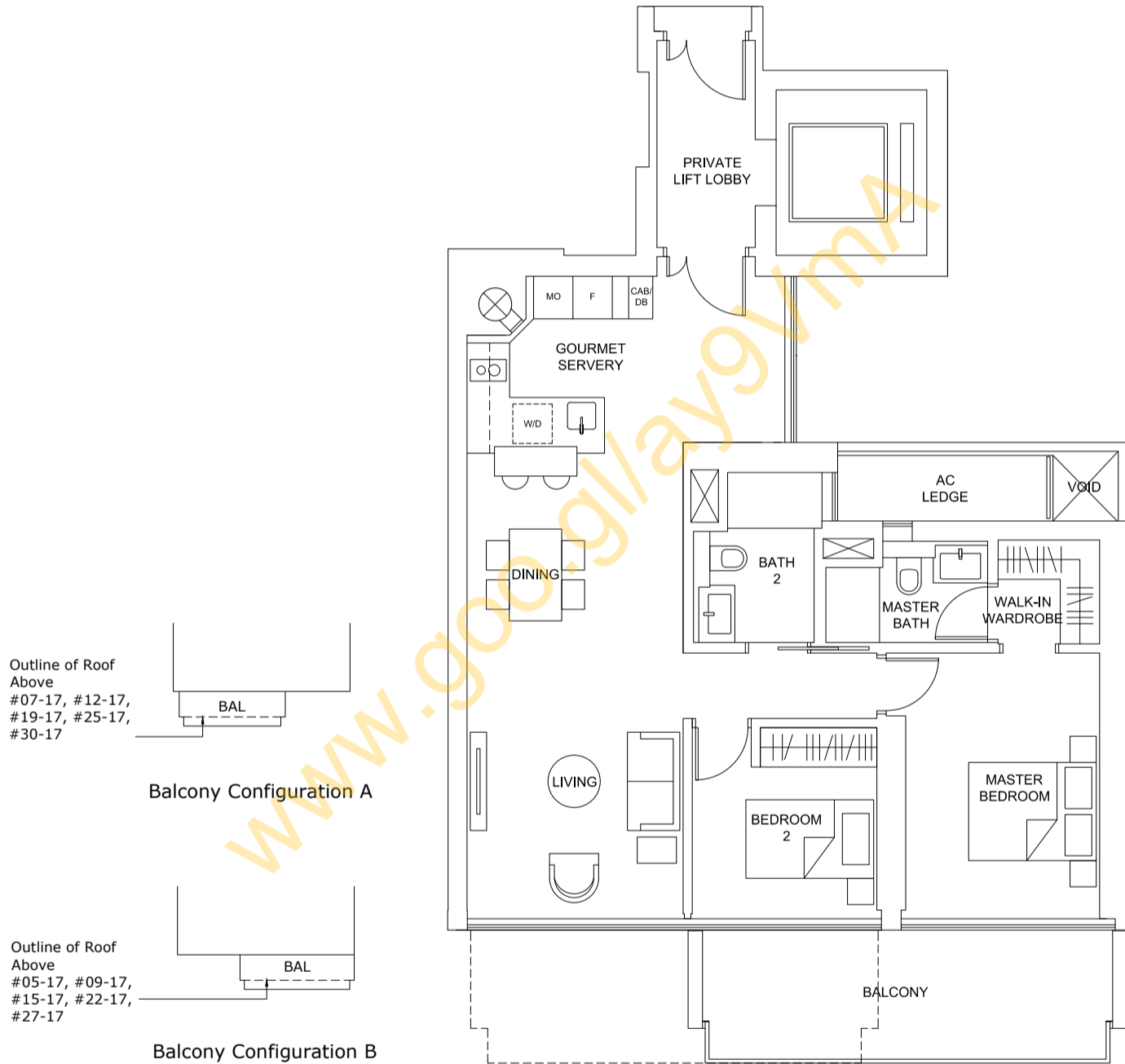
2-Bedroom

Type 2E

103 sq.m. / 1,109 sq.ft. to 104 sq.m. / 1,119 sq.ft.
 (including balcony of 12 sq.m. / 129 sq.ft. to 13 sq.m. / 140 sq.ft.)

TABULATION

Unit	Balcony Area		Floor Area		Configuration
	sq.m.	sq.ft.	sq.m.	sq.ft.	
#06-17, #07-17, #10-17, #11-17, #12-17, #16-17, #17-17, #18-17, #19-17, #23-17, #24-17, #25-17, #28-17, #29-17, #30-17	12	129	103	1,109	A
#04-17, #05-17, #08-17, #09-17, #13-17, #14-17, #15-17, #20-17, #21-17, #22-17, #26-17, #27-17, #31-17	13	140	104	1,119	B



All areas and/or measurements stated in this Brochure are approximates only and are subject to final survey, and the above plans are subject to change(s) as may be required by the releant authorities.

2-Bedroom

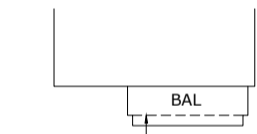
Type 2F

103 sq.m. / 1,109 sq.ft. to 104 sq.m. / 1,119 sq.ft.
 (including balcony of 12 sq.m. / 129 sq.ft. to 13 sq.m. / 140 sq.ft.)

TABULATION

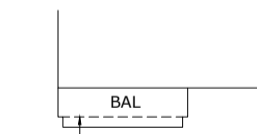
Unit	Balcony Area		Floor Area		Configuration
	sq.m.	sq.ft.	sq.m.	sq.ft.	
#08-16, #09-16, #10-16, #11-16, #16-16, #17-16, #18-16, #19-16, #22-16, #23-16, #24-16, #25-16, #29-16, #30-16, #31-16	12	129	103	1,109	A
#04-16, #05-16, #06-16, #07-16, #12-16, #13-16, #14-16, #15-16, #20-16, #21-16, #26-16, #27-16, #28-16, #32-16	13	140	104	1,119	B

Outline of Roof Above
#11-16, #19-16,
#25-16, #31-16

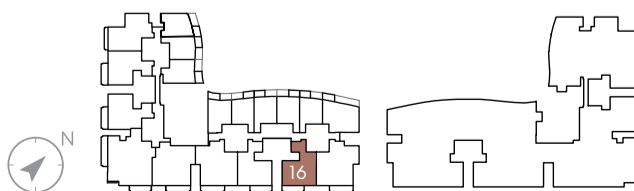
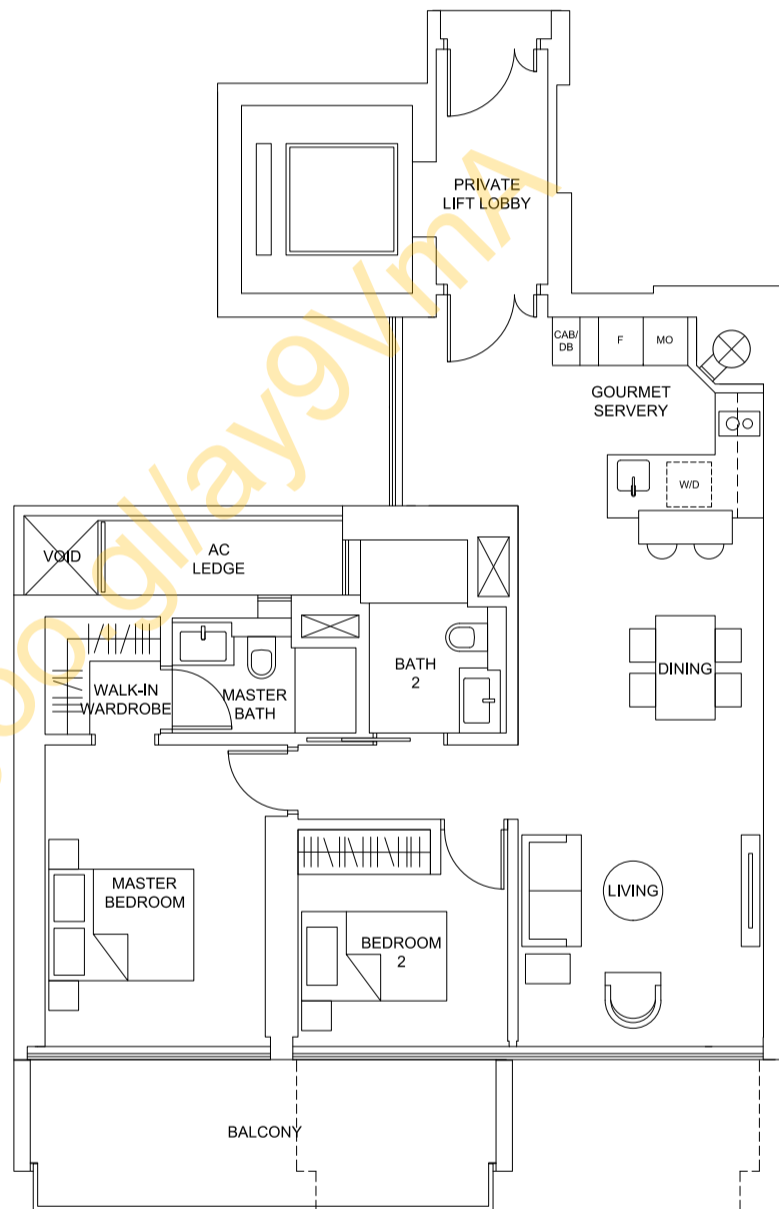


Balcony Configuration A

Outline of Roof Above
#07-16, #15-16,
#21-16, #28-16



Balcony Configuration B



All areas and/or measurements stated in this Brochure are approximates only and are subject to final survey, and the above plans are subject to change(s) as may be required by the releant authorities.